

David Kinney

Retro - CAD

2009 – 2017

E: dave@kinney.co.uk
T: +44 7595 515050
Skype: davidkinney

BACKGROUND

This series of imagery is the output so far of an on-going project. It explores visual representations of structures by architects and artists before a building is constructed. As these buildings were planned and constructed before sophisticated computer applications became available, they are the imaginings of what an architect intended to produce for a client using primitive versions of Computer Aided Design (CAD) software. Imagery is generated from a photographic image to produce a new photo illustration which falsely places the buildings in the early CAD era.

The project grew from earlier constructed imagery produced to project the outcome of conservation work while I was working collaboratively with the European Urban Conservation Programme at Dundee University and the Tayside Building Preservation Trust. This work was produced prior to quality software being available for the purpose of illustrating a convincing surface render. (see the Merchant's House Visual; fig 1). The final result was eventually realised many years later, (see fig 2)

The subject matter explores, in particular, inter and post war modernism with the aim of presenting the architecture from a fresh perspective. Many buildings of the period have deteriorated over time and often neglect and have lost their initial impact of the *new*. Consequently many of these buildings can be vulnerable to developers and the media who consider them to be unsightly.

Although photographic in nature, the imagery is not intended to be "*photo real*" as in present day software capabilities. The illustrative effect however, is not immediately apparent to the eye and requires closer scrutiny of the imagery to reveal the primitive CAD aesthetic.

EXHIBITION DETAILS

Digital prints on art paper.. Each approximately A2/A3 finished size.



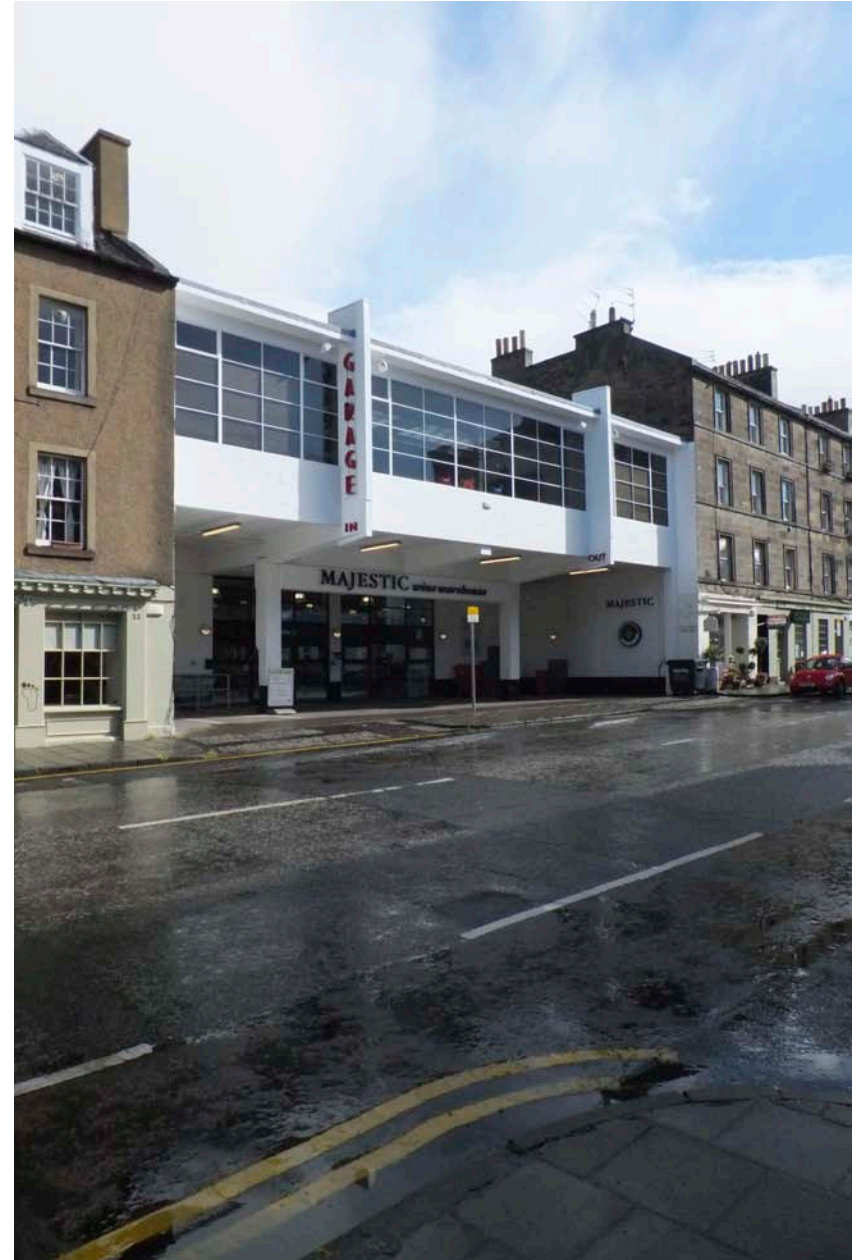
Fig.1 The Merchant's House, Brechin, for TBPT. © 1999 David Kinney



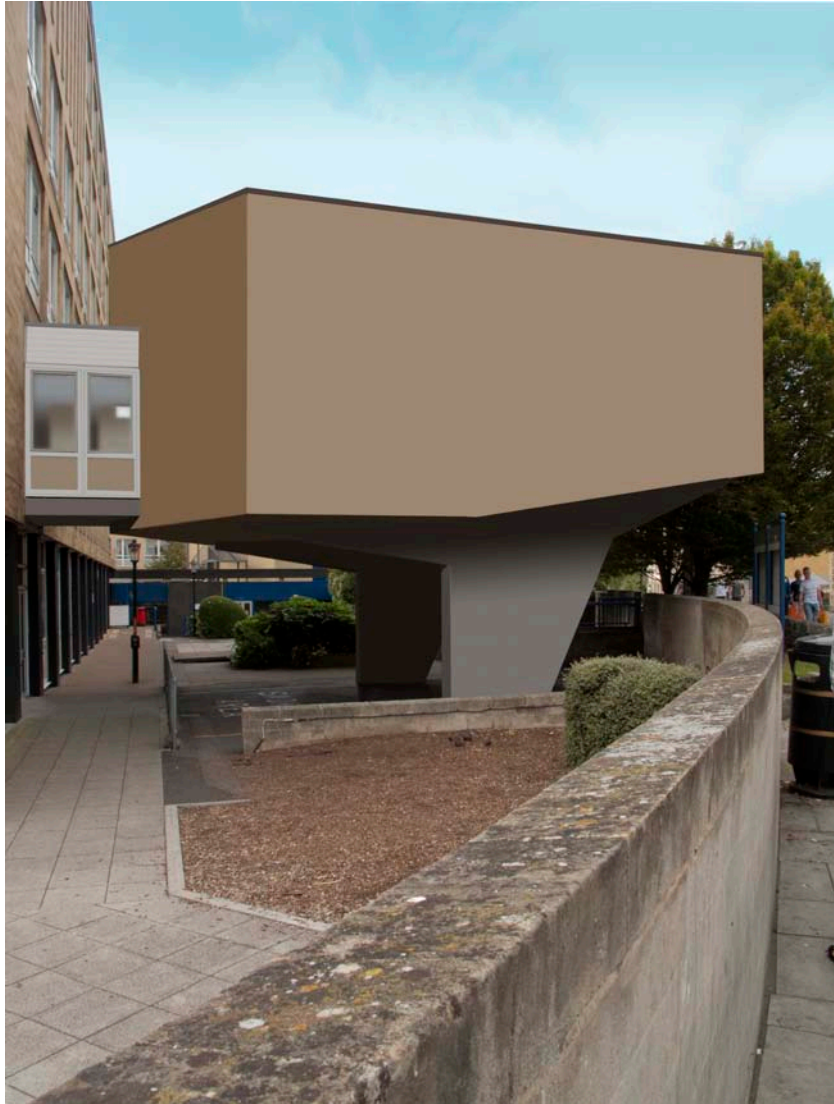
Fig . 2 Merchants House, Brechin after works (2012) © Louise Beattie Photography



Shed nr A66, Teesside © 2009, David Kinney



Causewayside Garage, Basil Spence. © 2011, David Kinney



Bath © 2009, David Kinney



↗ Pilot Tower, Folkestone. © 2009, David Kinney



→ Firshermans shed, Redcar, Teesside © 2010, David Kinney



Barn, North Spain © 2009, David Kinney



↖ *Garage, Spain.* © 2009, David Kinney

← *Barn North Spain* © 2009, David Kinney



Teessdale, North Yorkshire © 2009, David Kinney



Torness Nuclear Power Station, East Lothian © 2012, David Kinney



Villa Savoye, Paris © 2012, David Kinney